



WPM® METAL SHEET WATERSTOP UNIVERSAL R-L

ART.NR. 0010 -
21.07.2025

Universal construction joint sheet with polymer coating

PRODUCT DESCRIPTION:

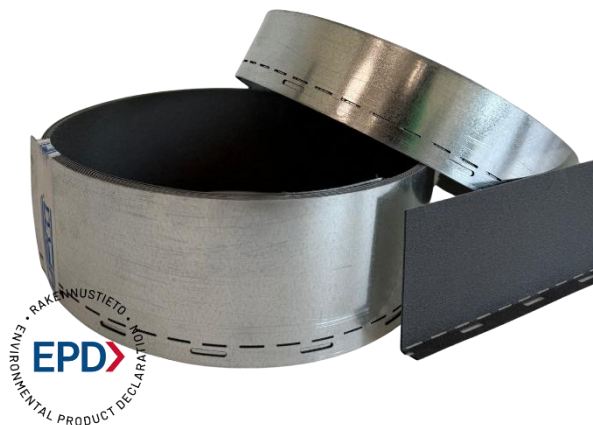
WPM® Metal Sheet Waterstop (construction joint profile) R-L is a galvanized steel sheet with a polymer coating.

APPLICATIONS:

WPM® Metal Sheet Waterstop (construction joint profile) R-L is used for waterproofing construction joints against pressurized water in various underground reinforced concrete structures. Typical applications include wall-to-floor, wall-to-wall, slab-to-slab, and wall-to-ceiling construction joints. Common areas of use are underground parking garages, tanks, and similar structures.

ENVIRONMENTAL DECLARATION:

EPD certificate number: RTS_283_24



PROPERTIES:

- Special polymer coating – elastic and non-reactive with water
- Polymer coating forms a homogeneous bond with concrete upon curing
- Installable directly into fresh Concrete
- Universal – suitable for both straight (R) and L-profiles
- Can be combined with expansion joint tapes
- Watertight up to 24 m (2.4 bar), officially tested by TalTech University – Test No. 372-A/19
- Tested for watertightness up to 15 bar – Test Report No. 1/2024
- Manufactured in Estonia

SPECIFICATIONS:

- Steel sheet: galvanized steel
- Sheet width: 85; 145; 175 mm
- 20 mm bent edge on one side
- Sheet thickness: approx. 0.5 mm
- Element length: 7.5 m
- Coating: elastic polymer
- Thickness with mineral coating: approx. 1.0–1.2 mm
- Color:
 - Polymer coating: dark grey
 - Galvanized steel: metallic
- Temperature resistance: -35°C to +75°C
- Installation temperature: no limitations

ADVANTAGES:

- Universality – one product usable as both straight and L-profile
- Easy and quick to install – independent of weather conditions
- The special polymer coating does not react with water before or during installation
- Forms a homogeneous bond with concrete – more watertight seal!
- Expected service life equals the lifetime of the structure
- Simple profile design and installation reduce the risk of installation errors

PACKAGING:

Steel strips in rolls: 3 x 7.5 m elements, connection clips, and glues included

STORAGE:

36 months (in cool, dry, original packaging)

The information provided in this product sheet is based on and corresponds to the available data. The warranty covers materials only and does not extend to incorrect installation or improper use. It is the user's responsibility to assess the material's suitability for the intended application. In case of doubt, trial installations should be carried out or advice should be sought from the manufacturer.



INSTALLATION INSTRUCTIONS:

Straight Profile – Wall-to-Slab Joint:

Place the roll on the base with the bent edge (with holes) facing up. Unroll and straighten the strip. Position the strip onto the slab reinforcement bars, between the vertical rebar of the wall. Use WPM installation holders to fix the strip. Overlaps should be 7–10 cm and secured using the included clips and glue. It can also be installed directly into fresh concrete.

L-Profile Installation:

Place the roll on the base with the perforated edge facing up. Unroll and straighten the strip. Bend the edge at a 90° angle to form the L-profile using a suitable tool. Then place the bent edge downward onto the reinforcement, fixing it with binding wire through the perforations.

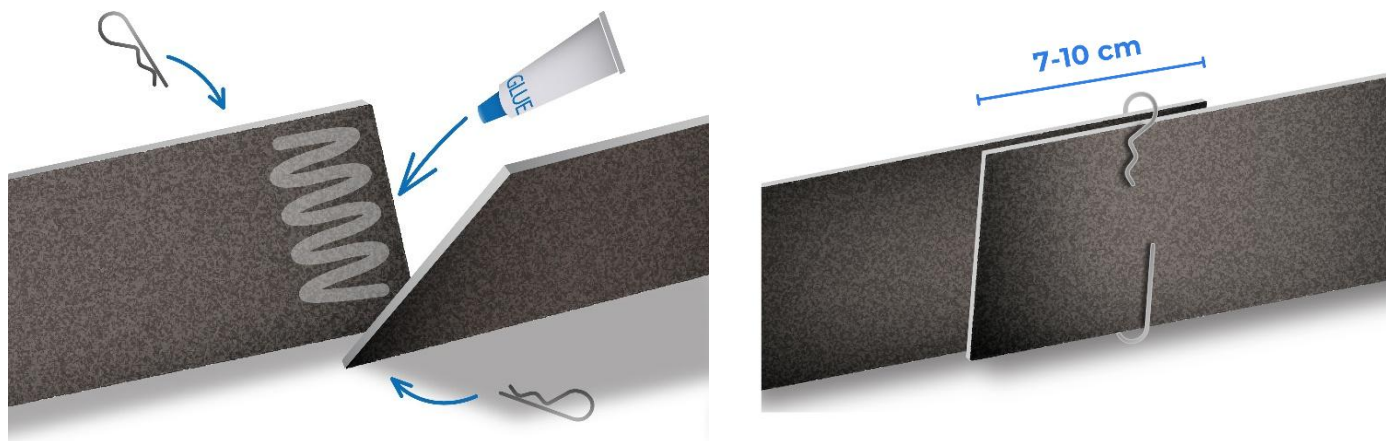
The sheet must be embedded at least 3 cm into concrete but not more than half the width of the strip. The polymer-coated side must face the water pressure direction.

Note! Installation may vary depending on the application. In case of uncertainty, please consult the supplier for additional information. The coating of the joint sheet is resistant to many chemicals – contact the supplier for detailed chemical resistance information if needed.

Overlaps - Ensure at least a 10 cm overlap at joints. Apply a bead of adhesive from the supplied tube at the center of the overlap, press the ends tightly together, and secure with the included clips.

- Correct overlap: minimum 7 cm, maximum 10 cm. Use clips or screws (screws only at the outer edge).
- Ensure uninterrupted sheet network.
- Do not damage the sheet.
- Sheet must be embedded at least 3 cm into the concrete.

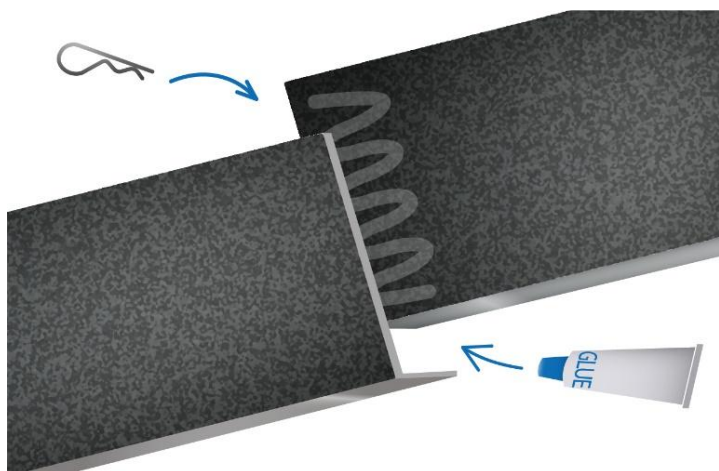
Straight profile connection



- Apply glue to the overlap area (do not make the overlay more than 10 cm).
- Secure with 4 clips or screws (screws may only be used on the outer edge of the profile).
- Attach the profile to the rebars with the profile fixer.

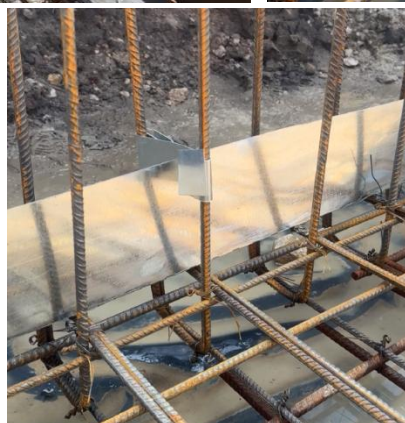
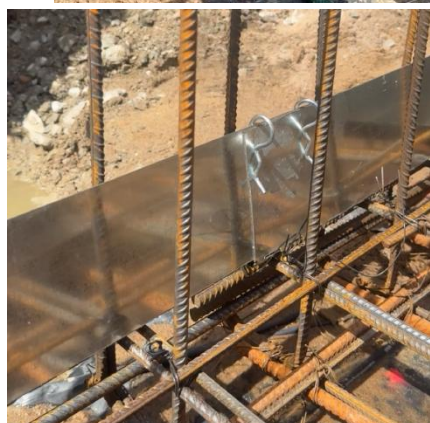


L-profile connection



- Apply glue to the overlap area (do not make the overlay more than 10 cm).
- Secure with 4 clips or screws (screws may only be used on the outer edge of the profile).
- Attach the profile to the rebars using binding wire.

Real life examples:



The information provided in this product sheet is based on and corresponds to the available data. The warranty covers materials only and does not extend to incorrect installation or improper use. It is the user's responsibility to assess the material's suitability for the intended application. In case of doubt, trial installations should be carried out or advice should be sought from the manufacturer.



Primostar®



TOOLS REQUIRED:

Connection clips, adhesive tube, binding wire, binding hook, screwdriver (drill), and metal screws

SAFETY:

Wear gloves and appropriate personal protective equipment when handling the product.

The information provided in this product sheet is based on and corresponds to the available data. The warranty covers materials only and does not extend to incorrect installation or improper use. It is the user's responsibility to assess the material's suitability for the intended application. In case of doubt, trial installations should be carried out or advice should be sought from the manufacturer.