



WPM® STOP-END PROFILE

ART.NR. 0005

24.10.2022

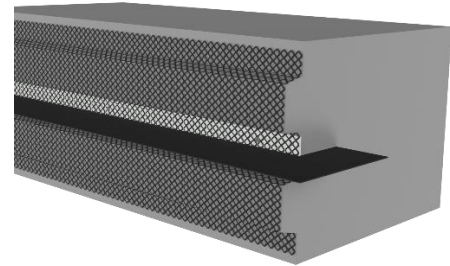
Hidden formwork waterstop to waterproof and finish construction joints.

PRODUCT DESCRIPTION

The WPM® STOP-END profile is a corrugated and perforated trapezoidal galvanized permanent formwork and waterstop that consists of two separate components:

- Galvanized steel sheet - 150mm wide with a special mineral coating that provides a watertight connection with concrete.
- Corrugated and perforated galvanized steel sheet with a width depending on the structure's thickness.

The element is installed in cast-in-place concrete between the reinforcement rebars. The corrugated trapezoidal steel sheets are connected perpendicularly to the mineral coating waterstop, giving the construction joint a corrugated trapezoidal shape, which maintains the structure's strength.



AREA OF APPLICATION:

WPM® STOP-END PROFILE is used simultaneously as a hidden or lost formwork and to waterproof the end of the construction joint. The element is used at floor, wall, or ceiling construction joint as a formworks.

PROPERTIES:

- Floor-, wall-, ceiling formwork and waterstop
- Watertight trapezoid-shaped corrugated construction joint
- Special coating – elastic, not reactive with water
- The mineral coating turns homogenous with concrete – better water-tightness
- Officially tested at Taltech University – N° 372-A/19
- Watertight against pressurized water of 2,4 bar / 24m below surface
- Made in Estonia

SPECIFICATIONS:

- Steel material: galvanized steel
- Steel sheet width: 150 mm
- Steel sheet thickness: 0,7 mm
- Element length: 2,2 m, 1,095 m
- Corrugated and perforated trapezoidal galvanized steel sheet width: depends on structures thickness
- Galvanized steel sheet coating: mineral coating
- Thickness of the mineral coating metal sheet: approx. 1,7 mm
- Color:
 - Galvanized steel: silver
 - Mineral coating: dark grey
- Temperature resistance: -35°C - +75°C
- Installation temperature: +2°C – +40°C

CHARACTERISTICS AND ADVANTAGES:

- Easy to install, up to 80% installation labor savings over traditional waterproofing
- Retains structure's strength properties (due to binding trapezoid-shaped construction joint/ formwork)
- Can be designed for load-bearing structures
- Waterproofs designed construction joint or end of construction joint as hidden formwork
- Special mineral coating does not react with water

The information given on the product page is based on and corresponds to the available information. The warranty covers the materials and does not extend to their incorrect installation and intended use. It is the user's responsibility to assess the material's suitability for the place of use. In case of doubt, it is necessary to carry out trial tests or ask for advice from the manufacturer



- Turns homogeneous with concrete – more watertight seal!
- Can be used in cooperation with other types of waterstops
- Life expectancy in the structure - structures lifetime

PACKAGE:

- Box: 6 x 2,2 m main detail, joint clips, 3 fixing glue tubes, metal screws, corrugated and perforated trapezoidal galvanized steel sheets.
- Box: 6 x 1,095 m main detail, joint clips, 3 fixing glue tubes, metal screws, corrugated and perforated trapezoidal galvanized steel sheets.

STORAGE:

36 months in cool and dry conditions with the original package.

APPLICATION:

WPM® STOP-END PROFILE element is installed between the reinforcement rebars. To connect elements, apply a glue stripe in the middle of the 10 cm overlap and fix it with clips. Use a binding wire to fix the element between the reinforcement rebars.

All WPM® waterproofing elements together in a system create an uninterrupted connection between all construction joints and controlled shrinkage cracks in the reinforced concrete structure.

RECOMMENDED TOOLS:

Connecting clips, glue tube, binding wire, binding hook, screwdriver (battery drill), and metal screws.

SAFETY:

Wear gloves and other personal protective equipment when handling and installing the product.

WPM® STOP-END PROFILE MEASUREMENTS:

Article Nr.	Structures thickness	Profile name
0005-200-22	200	WPM® STOP-END PROFILE 200 2,2 m
0005-250-22	250	WPM® STOP-END PROFILE 250 2,2 m
0005-300-22	300	WPM® STOP-END PROFILE 300 2,2 m
0005-350-22	350	WPM® STOP-END PROFILE 350 2,2 m
0005-400-22	400	WPM® STOP-END PROFILE 400 2,2 m
0005-500-22	500	WPM® STOP-END PROFILE 500 2,2 m
0005-600-22	600	WPM® STOP-END PROFILE 600 2,2 m
0005-200-11	200	WPM® STOP-END PROFILE 200 1,095 m
0005-250-11	250	WPM® STOP-END PROFILE 250 1,095 m
0005-300-11	300	WPM® STOP-END PROFILE 300 1,095 m
0005-350-11	350	WPM® STOP-END PROFILE 350 1,095 m
0005-400-11	400	WPM® STOP-END PROFILE 400 1,095 m
0005-500-11	500	WPM® STOP-END PROFILE 500 1,095 m
0005-600-11	600	WPM® STOP-END PROFILE 600 1,095 m

The information given on the product page is based on and corresponds to the available information. The warranty covers the materials and does not extend to their incorrect installation and intended use. It is the user's responsibility to assess the material's suitability for the place of use. In case of doubt, it is necessary to carry out trial tests or ask for advice from the manufacturer